



EEG - 8102

Digital Versatile Electroencephalograph

The EEG-8102 is a new Electroencephalograph (EEG) system developed by Delica™, the global leading manufacturer specialized in Neuro medical field. It includes functions of configurable 32 channel input, photic stimulation, SpO₂ measurement, and video synchronous display (for option).

The EEG-8102 is a high quality EEG system based on requirements from clinics and scientific research institutes. As the process of converting analog signal to digital signal is performed inside the amplifier before transmitting to PC via LAN cable, the risk of being interfered by external noise is greatly reduced during data transmission. The software installed on a PC with Microsoft Windows OS is very easy to use.

The EEG-8102 system is daily applied on patients with disordered brain function diseases and used in a range of services such as neurology, circulation, respiratory, endocrinology, and gastroenterology for diagnosis and long-time monitoring.

DELICA

Shenzhen Delica Medical Equipment Co., Ltd.

Address: 18th Floor, Building B, High-tech park, Guangqiao Road, Tianliao Community,
Yutang Street, Guangming District, Shenzhen, 518107, P.R. China

Tel : +86 755 86210116

Fax: +86 755 86210002

E-mail: info@delicasz.com

Http: // www.delicamed.com

CE 0123

PY(EEG-8102)20210805EN

DELICA

Digital Versatile Electroencephalograph
(EEG)

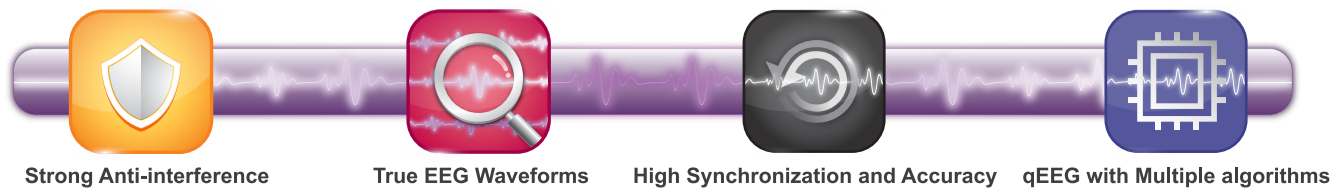


EEG - 8102

<http://www.delicamed.com>



HIGHLIGHTS



1. High Quality Amplifier with Strong Anti-interference Ability

The amplifier has strong anti-interference ability with features of low input noise, low input bias-current and high common mode rejection ratio (CMRR). The photoelectric isolation technology taken inside the amplifier enhances its security and reliability.

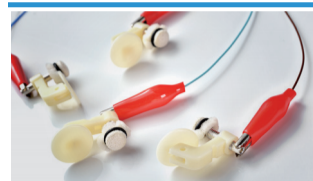
2. True Waveform Data without Excessive Filtering

The combination of pre-amplifier with high DC offset tolerance and software without excessive filtering enables the system to obtain true and reliable waveform data.

3. Video Synchronous Display during Recording and Review

Taking exclusive video processing technology with the software, the video and waveforms can display synchronously without any delay during recording and review.

ACCESSORIES



Cup Electrode

SpO₂ Module

Event Marker



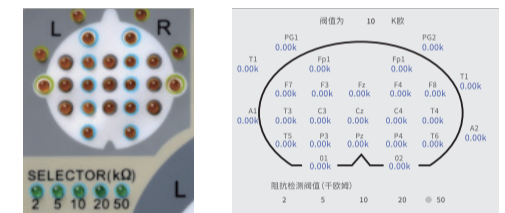
FEATURES

Evoked Potential Tests

- User-definable Photoc Stimulation Function
- Voice-guided Hyperventilation Test Function:

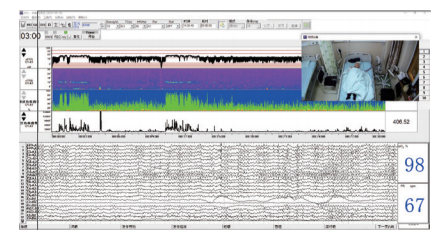
Bi-impedance Check:

- Onboard LED matrix indicates real-time impedance status of each channel
- Dedicated impedance check window on software shows real-time impedance values and status



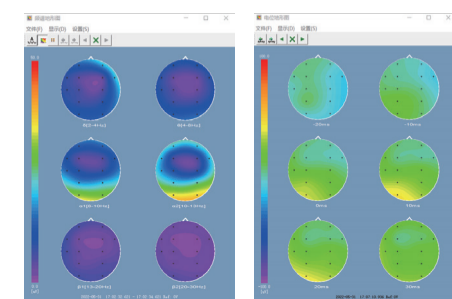
Acquisition

- Real-time aEEG/cDSA display
- SpO₂ and Pulse Rate display
- Video synchronous to data acquisition

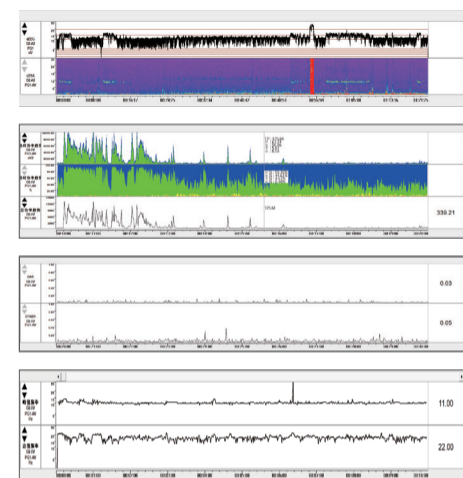


Brain Topography

- Potential Topographic Map and Spectral Topographic Map



qEEG Function (Quantitative Analysis) Various combination/layout display, one key to switch



Multiple Indices:

- aEEG: Amplitude-integrated EEG
- ABP: Absolute Band Power
- cDSA: Color Density Spectral Array
- TP: Total Power
- ADR: Ratio of alpha to delta
- DAR: Ratio of delta to alpha
- PSF: Peak Spectral Frequency
- SEF: 95% Spectral Edge Frequency
- RBP: Relative Power Trend
- PPF: Peak to Peak Frequency
- DTABR: Value of $(\delta+\theta) / (\alpha+\beta)$